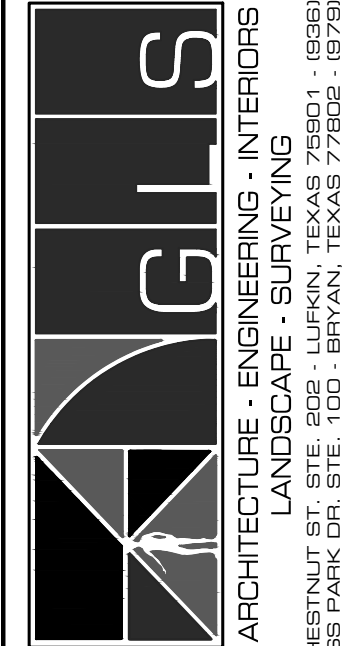
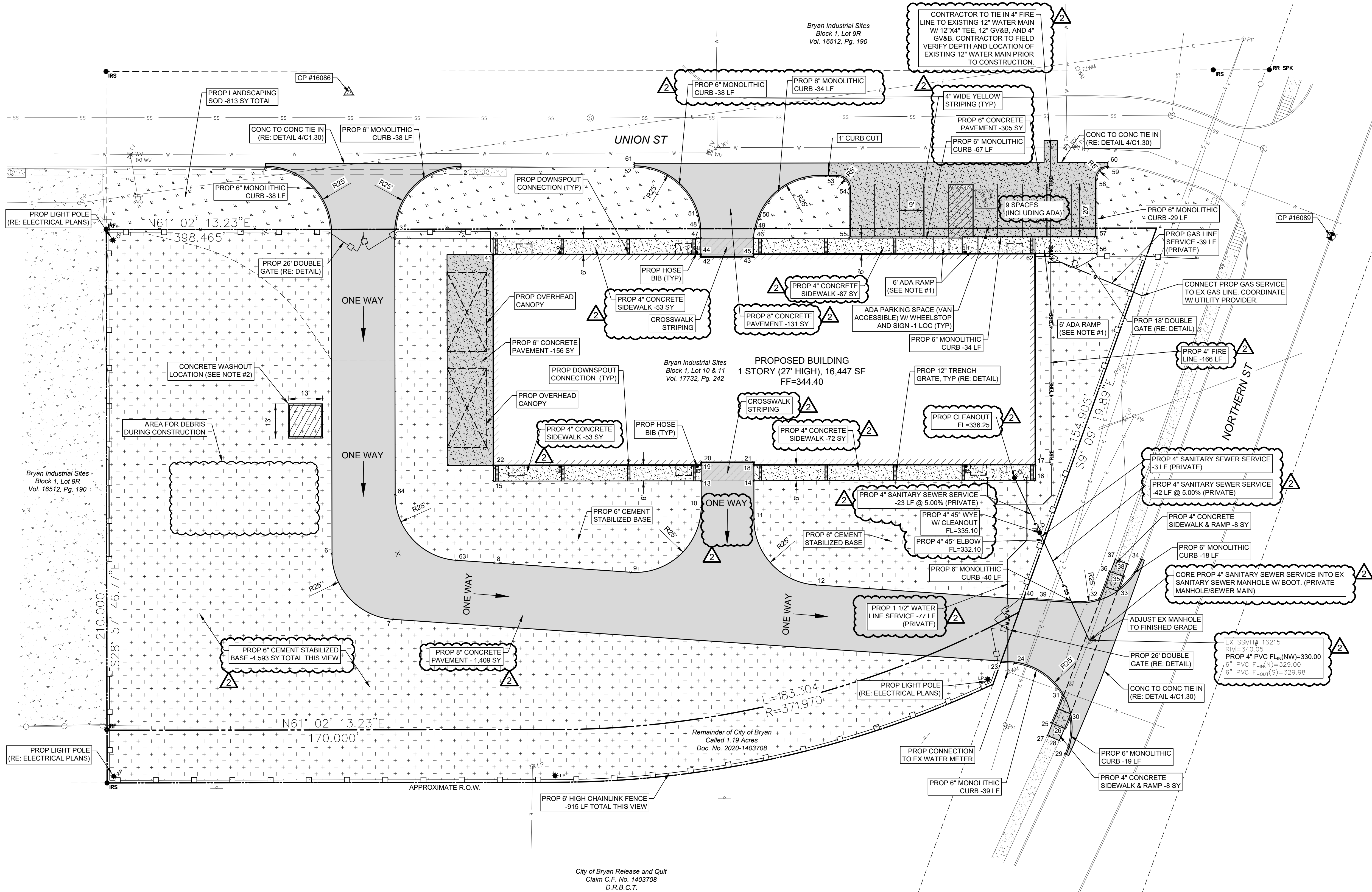


Point Table			
Point #	Raw Description	Northing	Easting
1	CONC	10221038.7068	3541961.0761
2	CONC	10221074.4889	3542026.0401
3	CONC	10221042.1902	3542015.7782
4	CONC	10221038.7311	3542017.0871
5	CONC/SW	10221056.7934	3542049.7222
6	CONC	10220922.5602	3542053.8066
7	CONC	10220912.0222	3542086.3625
8	CONC	10220949.1644	3542109.2911
9	CONC	10220971.1774	3542156.5920
10	CONC	10221005.9493	3542167.9172
11	CONC	10221011.3443	3542187.7901
12	CONC	10221000.7847	3542220.2116
13	CONC/SW	10221014.4540	3542163.2101
14	CONC/SW	10221024.1389	3542180.7087
15	CONC/SW	10220976.2996	3542094.2727
16	SW	10221075.8522	3542274.1443
17	BLDG/SW	10221081.1018	3542271.2388
18	BLDG/SW	10221029.3885	3542177.8033
19	BLDG/SW	10221019.7036	3542160.3046
20	BLDG/CONC	10221020.6151	3542159.8002
21	BLDG/CONC	10221030.2999	3542177.2988
22	BLDG/CONC	10220981.5492	3542091.3672
23	BC	10221009.1032	3542296.1530
24	BC	10221011.1653	3542300.6763
25	BC	10220998.1529	3542323.8713
26	BC	10220998.7414	3542329.3397
27	SW	10220993.2403	3542324.9520
28	SW	10220993.7646	3542329.8235
29	BC	10220990.3846	3542334.1638
30	BC	10221003.0596	3542329.3778
31	BC	10221009.3265	3542322.4931
32	BC	10221048.2232	3542317.0163
33	BC	10221055.8141	3542321.9724
34	BC	10221069.0510	3542323.5263
35	BC	10221060.1019	3542321.2790
36	BC	10221059.1441	3542315.3559
37	SW	10221064.1791	3542315.1706
38	SW	10221064.9419	3542320.0099
39	BC	10221036.8039	3542296.4238
40	BC	10221034.6943	3542291.8906
41	BLDG/CONC	10221051.5438	3542052.6277
42	BLDG/CONC	10221088.7868	3542122.0695
43	BLDG/CONC	10221098.4717	3542139.5681
44	CONC/SW	10221089.6982	3542121.5650
45	CONC/SW	10221099.3831	3542139.0637
46	CONC/SW	10221104.6462	3542136.1825
47	CONC/SW	10221094.9478	3542118.6595
48	BC	10221097.9174	3542116.4150
49	BC	10221108.3351	3542135.2377
50	BC	10221113.1238	3542134.2386
51	BC	10221101.8075	3542113.4490
52	BC	10221106.4093	3542083.4886
53	BC	10221140.4635	3542152.6636
54	BC	10221138.7175	3542158.8015
55	BC/SW	10221122.2189	3542167.9329
56	SW	10221162.4883	3542253.0820
57	BC/SW	10221167.7379	3542250.1765
58	BC	10221187.1495	3542239.4328
59	BC	10221193.1199	3542240.9459
60	CONC	10221194.7086	3542239.9301
61	CONC	10221107.7151	3542082.7504
62	BLDG/SW	10221151.0964	3542232.4992
63	CONC	10220943.2232	3542096.5246
64	CONC	10220953.7170	3542064.1394

- NOTE:
- REFERENCE B/C/S UNIFIED DESIGN GUIDELINES FOR ADA RAMPS ON SITE.
 - REFERENCE B/C/S UNIFIED DESIGN GUIDELINES FOR CONCRETE WASHOUT.
 - THE PROJECT SITE IS NOT LOCATED IN THE 100-YEAR FLOODPLAIN. FIRM PANEL NO. - 48041C0215F.



BTU Transmission Warehouse
Bryan Industrial Sites Block 1, Lot 10 & 11 Vol. 17732, Pg. 242
2301 Fountain Avenue #247, Bryan, Texas
Site and Utility Plan

JOB NUMBER
631048
SHEET NO.

C1.10

